



TYPE 30 SERVO VALVES

ENGINEERED FOR ROBUST MILITARY APPLICATIONS

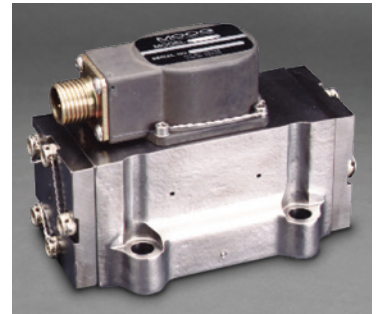


The Type 30 Servo Valves encompass a two-stage, flow control, double-nozzle, mechanical feedback design within a rugged stainless-steel body with an integrated torque motor in an environmentally sealed compartment. Its nozzle-flapper design is a proven technology for military applications where high response, reliability, stability, and accuracy are required within a compact space.

This product is a proven hydraulics offering in military applications and provides high power to weight ratio and efficiency, while delivering high dynamics and precise flow control for better overall system control.

ADVANTAGES

- High response improves control capability
- Compact light weight package for mobile applications
- Rugged construction designed for extreme conditions



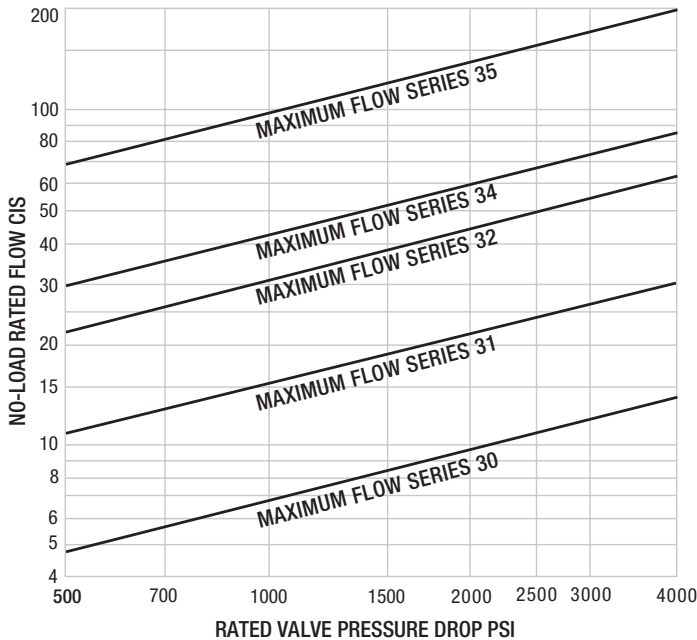
TYPE 30 SERVO VALVES

TYPE 30 SERVO VALVES

Valve Series	Port Circle Diameter		Max Rated Flow		Valve Weight	
	in	mm	gpm at 3000 psi	liters/min at 210 bars	lbs	kg
Series 30	0.480	12.19	3.1	12	0.42	0.19
Series 31	0.625	15.88	6.8	26	0.81	0.37
Series 32	0.780	19.81	14.0	54	0.81	0.37
Series 34	0.780	19.81	19.0	73	1.10	0.50
Series 35	1.000	25.40	44.0	170	2.13	0.97

RATED FLOW

- Each valve series covers a range of no-load rated flow to the maximum shown (for MIL-H-5606)



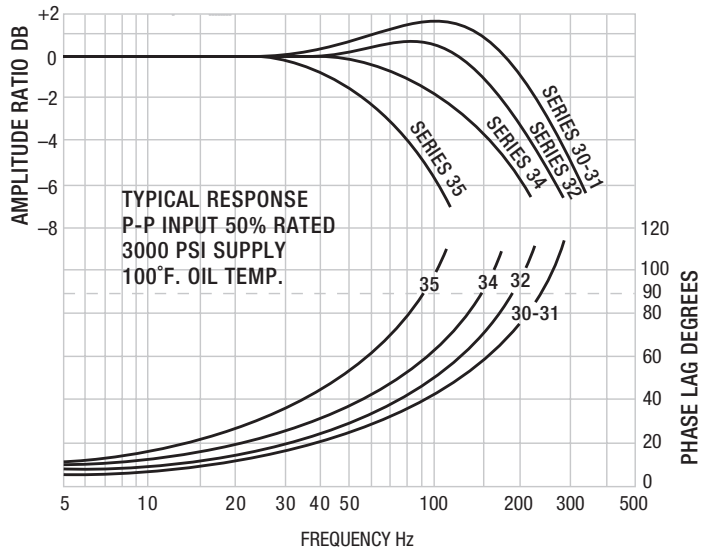
INTERNAL LEAKAGE

- Includes first stage hydraulic amplifier flow, spool null leakage flow, and bushing laminar leakage flow
- Spool null leakage flow* is essentially zero when spool is off-null
- Servo valve internal leakage excluding spool null leakage is called tare flow**

MAXIMUM LEAKAGE OF STANDARD TYPE 30 SERVO VALVES

Valve Series	Tare Leakage Flow** CIS at 1000 psi	Tare Leakage Flow** CIS at 3000psi	Spool Null Leakage Flow* (% rated flow at rated pressure)
Series 30	< 0.20	< 0.35	< 4
Series 31	< 0.25	< 0.45	< 4
Series 32	< 0.28	< 0.50	< 3
Series 34	< 0.35	< 0.60	< 3
Series 35	< 0.45	< 0.75	< 3

TYPICAL PERFORMANCE RESPONSE FOR STANDARD TYPE 30 SERVO VALVES



MOOG

SPACE AND DEFENSE GROUP

AMERICAS
+1 716.687.4373
defense@moog.com
moog.com/defense

EUROPE
+49 (0) 7031.6220
defenceurope@moog.com
moog.com/defence

AUSTRALIA
+61.3.9561.6044
info.australia@moog.com
moog.com.au



Moog Space and Defense



@MoogSDG



@MoogSDG



@MoogSDG



@MoogInc