



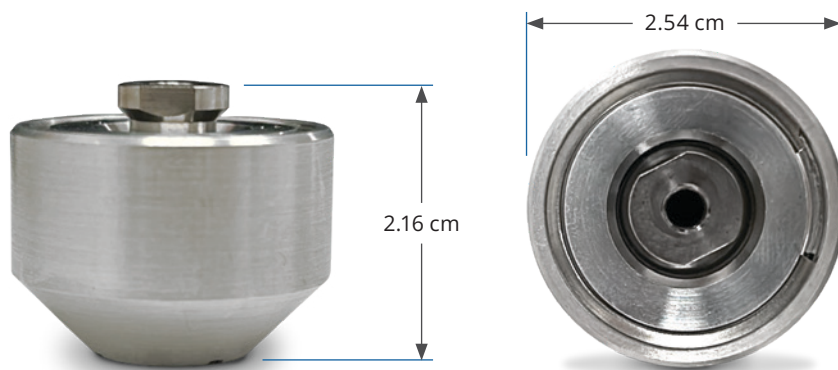
## SMALL REACTION WHEEL ISOLATION



The Moog reaction wheel isolator is customizable and scalable for a wide range of wheel sizes. The isolation system is designed to have a first mode >40Hz to be compliant with typical rideshare requirements, and once on-orbit, the isolation system has a wide temperature operating range and provides jitter isolation for optimal bus performance.

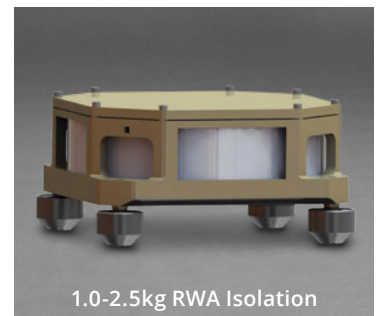
### REACTION WHEEL LAUNCH AND JITTER ISOLATION

- Tunable to customer specific requirements
- First mode >40Hz, compliant with rideshare requirements
- Operating temperature -40 °C to 70°C



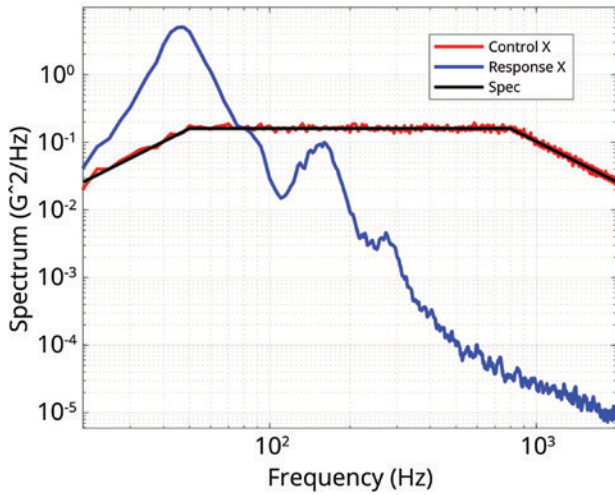
Isolator Mass, 16.5 g

### REACTION WHEEL ISOLATION CONCEPTS

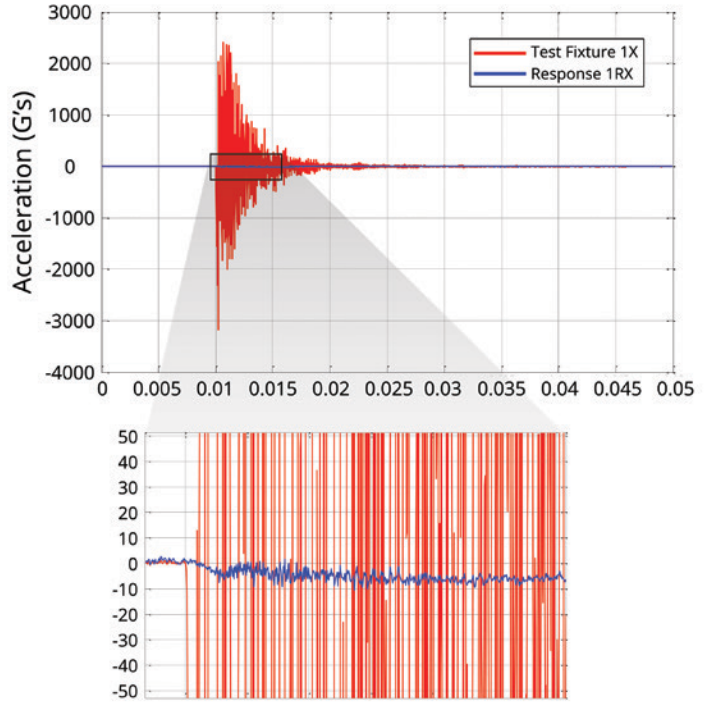


# SMALL REACTION WHEEL ISOLATION

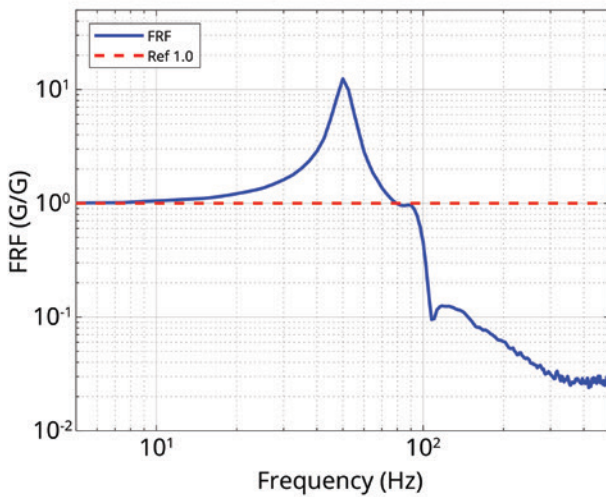
Random Vibe Performance, GEVS Qual



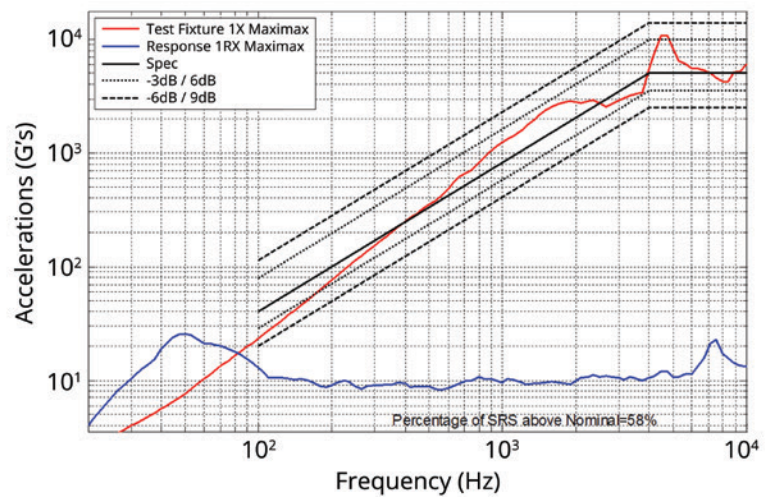
Shock Performance, Time History



Jitter Testing, Measured FRF



Shock Performance, SRS



# MOOG

Paul Zamprelli  
pzamprelli2@moog.com  
www.moog.com/space



Moog Space and Defense



Moog Inc.



@Moog\_Inc



@Moog.Inc

Equipment described herein falls under the jurisdiction of the EAR and may require US Government Authorization for export purposes. Diversion contrary to US law is prohibited.

©2024 Moog, Inc. All rights reserved.

Product and company names listed are trademarks or trade names of their respective companies.

Form 500-1447 0724